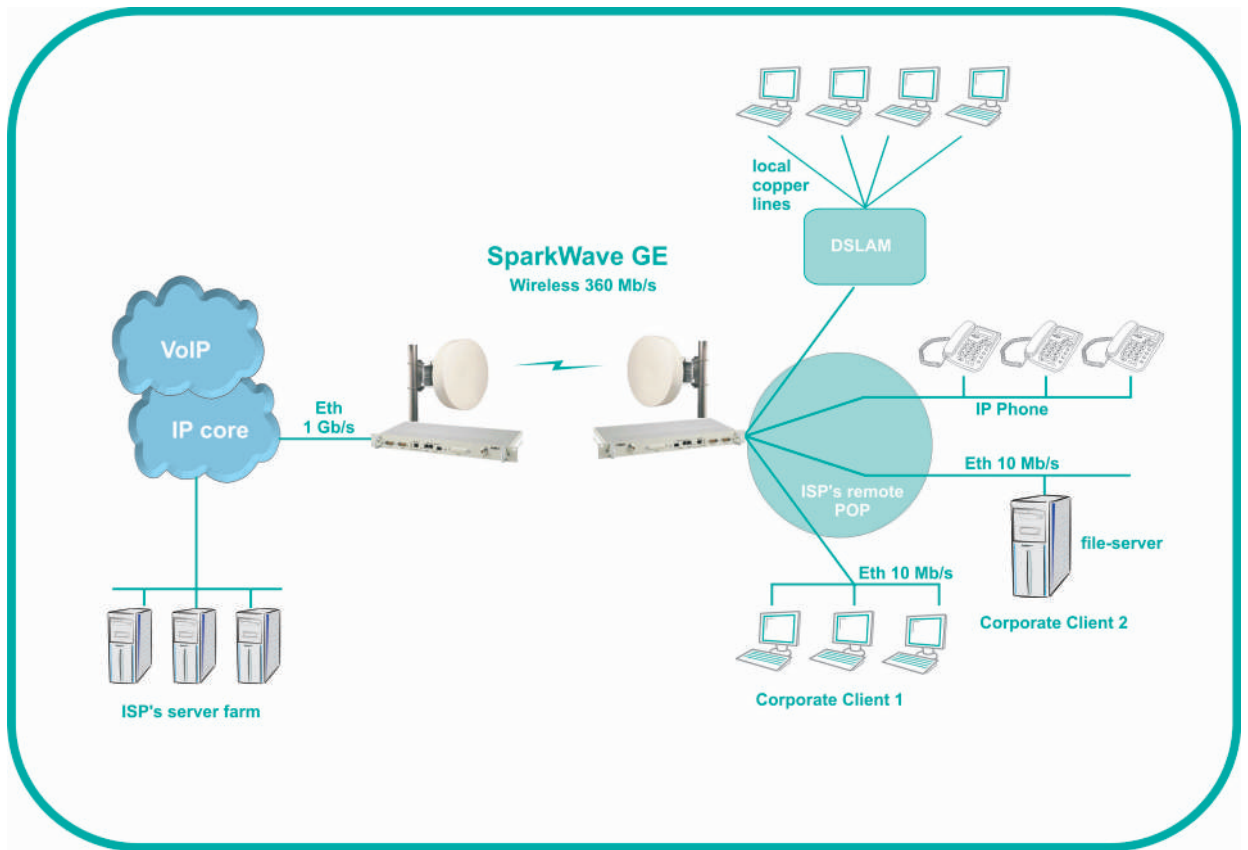


SparkWave HSP is ideal for access and backbone connections between POPs of ISP, to wireless access base stations, to xDSL concentrator locations, etc.

Robust design enables connections most demanding climatic areas where harsh conditions (-50 degrees) do cause problems in most cases and where the terrain configuration makes it very difficult to deploy fiber/optical networks: high hills, vast desert areas, North Pole, mountain regions, regions with high humidity

Important: rain does affect microwave radio only on higher frequency bands.

When comparing Wireless Vs Wire-line its important to outline that with redundancy systems (FD, SD and HSB) as well as with additional software mappers protection the system availability is comparable to wire-line networks but allow fast deployment thus fast return on investment. Moreover, the capacity scalability makes drastically reduces costs of future upgrades.



Ultra fast new generation of SparkWave GE packet radio with 1 Gigabit Ethernet interfaces through 360Mb/s bandwidth provides means for very simple interconnection of Points of Presence to the backbone network of Internet Service Providers. Ethernet traffic can be easily tagged so that various traffic types have different priorities in entering the trunk link. According to the above scheme, plain internet users on DSLAM would have no priority, corporate client with workstations and servers would have a lower priority and IP telephony users a higher priority.

