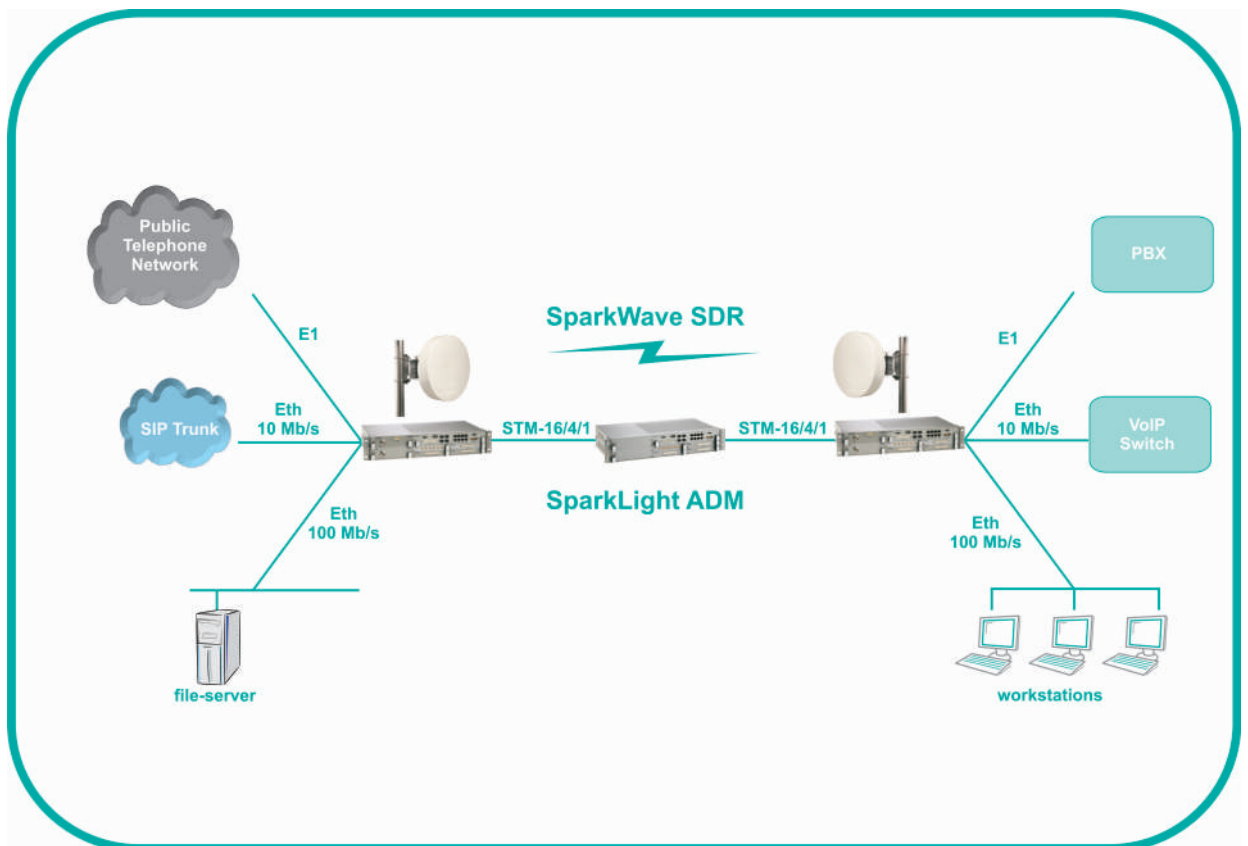


The main advantage of Iskra Sistemi microwave radio is possibility to transmit voice, data and video on single platform either wireless or wire-line. Because of high level of integration between wireless and wire-line applications the SDR platform is ideal when combining wire-line SDH/NGN networks and wireless back up of main lines or interconnections with other wire-line networks.

Most demanded applications are:

- Connection of local exchanges
- Provision of high speed data connection to xDSL concentrators where no fiber back up and main line with same SDR platform
- Connections of large/demanding customers where an existing cable network is not available, a combined solution consisting of a mix of data and voice interfaces is typically a cost-saving and preferable option;
- Temporary installations during the cable network build-out phase;
- Connection of office buildings to the network allows economic delivery of services for numerous customers in a single building.



Iskra Sistemi's Next Generation SDH systems are supported by both, radio and optical interfaces. the same box can be used to provide the primary optical link and secondary microwave radio backup link. If supported by a ring topology, this is a reliability that simply can not be matched in industry. The NG SDH systems support all and any combination of interfaces and traffic. The same network can be used to transmit classical data traffic through 10, 100 or 1G Ethernet, such as remote workstations connection to local servers, IP telephony can be transported with QoS in a separate channel on the same trunk, and classical synchronous communications, such as PABX interconnection, can be supported through E1 interfaces, all with guaranteed bandwidth.

